

CELIER AVIATION	Bulletin Service Letter Level:MANDATORY	Aircraft Type: Xenon R/RT/RST
----------------------------	--	--

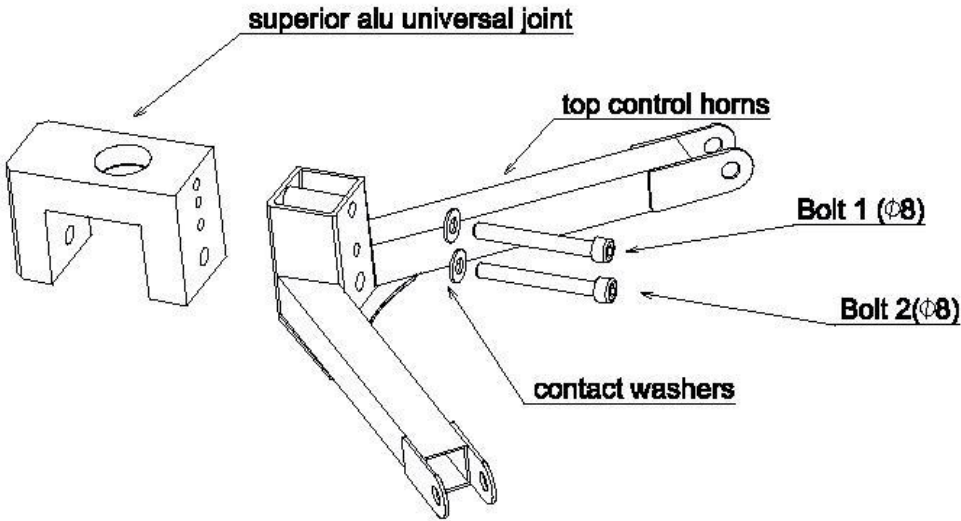
This bulletin service mandatory concerns all Xenon with a black V top control horn with the cube having rounded edges. It does NOT concern older versions with the sharp edges..

As a preventive action, we want to add a security in the fixation of that part, with a third screw. Also replacing the older one with the new model that will penetrate with its smooth section in the hole, thus the force is exercised correctly, not on the tread.
New special bolts are provided by our factory. Please send your address complete for shipping.

If you do not feel comfortable to do this operation, please refer to your distributor for its application.

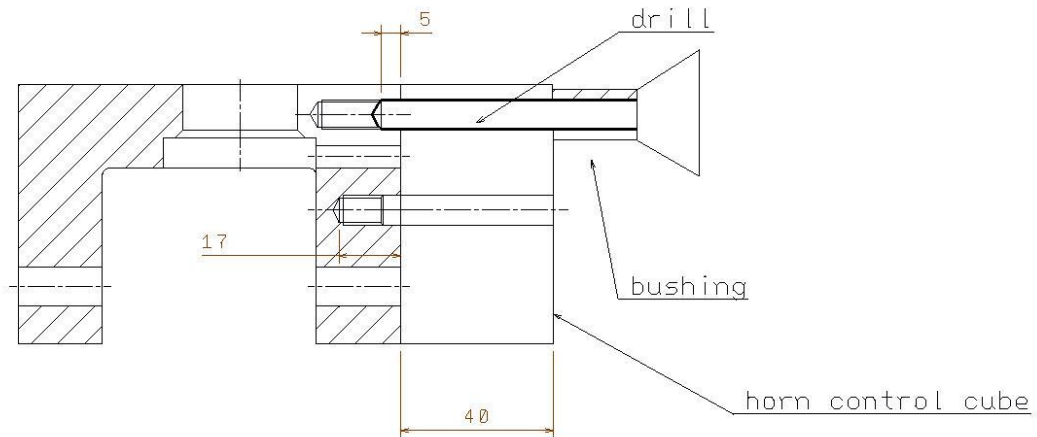
Please note on your maintenance book the application of all bulletin services.
Do not hesitate to contact us for further information if necessary.

We remind you that a Mandatory Bulletin Service request you to STOP any flying until it is applied. No exceptions.

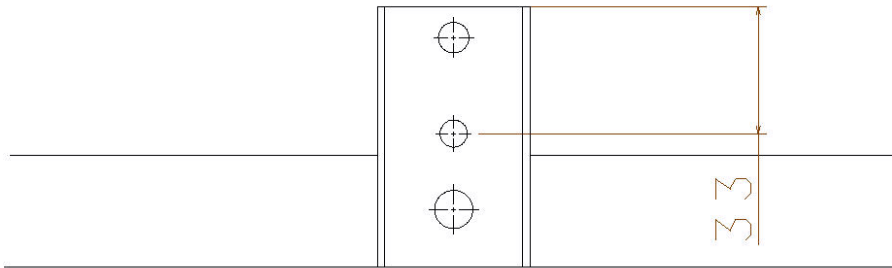


CELIER AVIATION	Bulletin Service Letter Level: MANDATORY	Aircraft Type: Xenon R/RT/RST
----------------------------	---	--

1. Remove the old Ø8 bolt.
2. Drill through M8 as it is shown on the drawing. Adjust length of the drill, so that the bushing stops it after 5mm of drilling (bushing must limit the length of the drill to 45 mm)



3. Make a new Ø6.5 hole in horn control cube as it's shown on the drawing



4. Fix control horn back and use Ø6.5 hole as a guidance to drill in alu universal joint a hole 17 mm depth.
5. Remove the control horn and make M8 thread in alu universal joint Ø6.5 hole.
6. Fix the control horn back and repeat the same operation in this new hole as (2)
7. Remove again control horn to clean with compressed air both holes.
8. Fix control horn back via 3 points. Put blue Loctite (Medium) on the threads of the 2 upper bolts ó fix ó torque to 25Nm.
9. Install safety wire through holes of both upper bolts
10. Medium tight the roll axle Ø10 nut, until limit of free movement (roll) of the head (it must not force). Place back the safety pin.