

MAST fixation preflight check



Pic.1



Pic.2

Celier Aviation reminds that it is mandatory to do a preflight check.

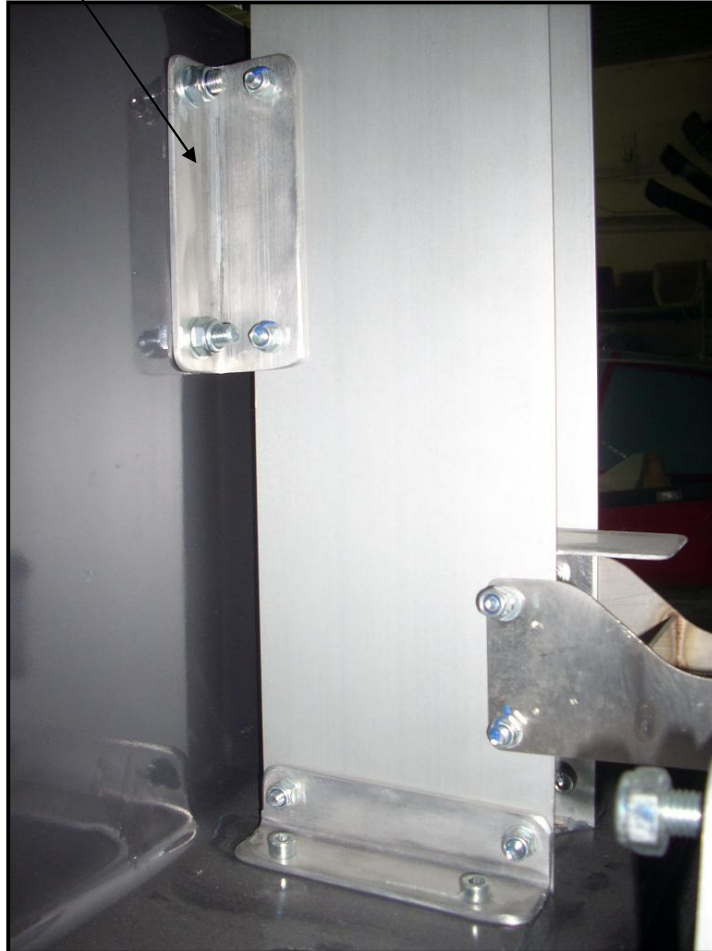
Before every flight and after every hard landing check top fixation mast area.

It is convenient to use a torch to see better the mast fixation points. (see Pic.1)

Search for excessive wear, fatigue or cracks. (see Pic.2)

Remember that service manual says that every 100 hours during overhaul service it is mandatory to check the tightening moment of every fixation bolts.

TBC for top mast fixation aluminum angle (CAXen-K-M-6003A) is 100 hours.



Pic.3. Aluminum angle of mast fixation to replace

It is obligatory to replace every 100 hours the 2 aluminum angles (6003A) (see Pic.3.) fixing mast to fuselage.

During replacement of aluminum angles it is obligatory to carefully inspect fixation points on the cabin and the mast searching for excessive wear, fatigue or cracks.

We remind, as per the XENON maintenance manual, to inspect deeply after any hard landing, suspected shock, these parts.